

Artists

From wild seascapes, strange nightscapes, elegant abstract compositions and atmospheric photographs to a playful sunset flight of parakeets and minimalist, meditative observations of wading birds; from cluttered interiors full of cats and dogs eating cake, flowers busy with foraging bees and butterflies, to an intricate reductive linocut of a family feast; this section celebrates the beautifully crafted work of fine art painters and printmakers.

Two new artists have joined us this year – **Cat Moore**, a hugely talented printmaker, and **Ian Cunliffe**, another fine printmaker who is also a children's book illustrator. **Vanessa Cooper**, who joined us in 2020 has added to her collection with paintings from an exhibition which had to be cancelled because of the pandemic. Her earlier collection was barely out before lockdown, likewise the new works from **Mark Jessett**.

In her biog, Cat Moore describes herself as 'being in love with the great adventure of it all'. It is this sensibility that attracted us to her work. It is also the perfect way to express why we do what we do.

Cat Moore, Ky Lewis pg.19

Vanessa Cooper pg.20–21, **Linda Litchfield** pg.22

Helen Minns pg.22–23, **Andrew Palmer, Brigid**

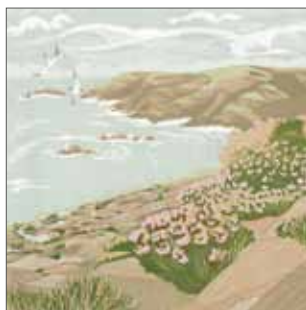
Calderhead pg.24, **Una Joy** pg.25

Ian Cunliffe pg.26, **Mark Jessett** pg.26–27

Cat Moore



CM955
Spilled Sunlight



CM954
Springtime Thrift



CM956
December Morning



CM959
Feast And Family



CM960
Rowan Berries



CM958
Lapwings And Winter Stubble



CM957
The Sitooterie (detail)

Ky Lewis



KL629
Wild Carrot



KL628
Moths, Mice and Memories



KL626
Bluebell



KL625
Allium Rising

Cat Moore is a self-taught linocut printmaker, living and working in the hills of Northumberland, inspired by wild places and small everyday domestic moments. 'I am always learning, always surprising myself, and in love with the whole big adventure of it all.'

Ky Lewis studied illustration and printmaking at Camberwell School of Art. Her practice centres on alternative photographic processes employing light to make her camera-less images. She loves slow photography using pinhole cameras to document landscape, capturing moments related to memory.

Product Information

Card: 150 x 150 mm, soft white uncoated 350gsm. **Envelope:** Kraft. Sold in units of 6



Vanessa Cooper



VC940
Soul Gardening



VC941
Hedgerow



VC942
Faith, Hope, Love, Luck



VC943
Tickled Pink



VC944
Happy Birthday



VC945
The Incredible Journey



VC946
It's Great When You Cake



VC947
Forever Hopeful Labrahoover



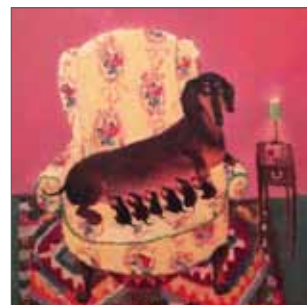
VC948
You Shall All Have Fishies



VC949
Kid In A Sweetshop



VC950
Bath Time



VC951
Nursing Chair

Vanessa Cooper is a Dorset based artist. She studied at Portsmouth University and has been exhibiting since 1987. Her paintings are widely renowned and collected, loved for their joyous response to nature, their gentle, endearing humour and skilful and exuberant use of colour.

Product Information

Card: 150 x 150 mm, soft white uncoated 350gsm. **Envelope:** Kraft. Sold in units of 6



VC952
Bumblebee, Butterfly, Beetle



VC953
The Good Life



VC903
Loving Cup



VC905
Park Walk



VC906
Ten On The Bed



VC902
Glass Jar



VC904
Caught In The Act



VC901
Nature's Bounty



VC908
Let Them Eat Cake



VC909
Greasy Spoon



VC900
Not A Walk In The Park



VC907
You Shall All Have Fishies



Linda Litchfield



LL804
Tversted



LL633
Shedloads, 9 of 54 Sheds



LL349
I Have Not Forgotten You



LL117
Swimming Every Day

Plumette Notecards – pg.32



NC116
Beautiful Weather



NC349
I Have Not Forgotten You

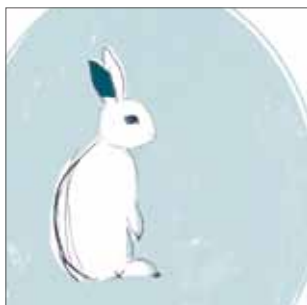


NC057
Through A Glass



NC000
Purple Leaves

Helen Minns



HM832
Kit



HM794
Joy, Swan, Tangerine Sun



HM799
Swan Circle



HM797
Grey Hare

Linda Litchfield studied fine art textiles at Goldsmiths and works mainly within that medium. Hand-stitch is her preferred method of mark-making and she often uses this in conjunction with found and/or plant-dyed fabrics.

Helen Minns makes simple and beautiful illustrations inspired by British wildlife and the natural world. She is known for her reduced aesthetic and sensitive use of colour. Her illustrations can be found on textiles, fine bone china and fine art prints.

Product Information

Card: 150 x 150 mm, soft white uncoated 350gsm. **Envelope:** Kraft. Sold in units of 6
Plumette Notecard (single): 120 x 120 mm and 90 x 120 mm, soft white uncoated 350gsm. **Envelope:** Kraft

Helen Minns cont.



HM964
Turquoise Peacock



HM962
Coastal III Curlew Sandpiper



HM795
Sandpipers



HM963
Bird In Circle



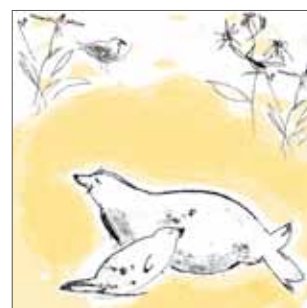
HM961
Coastal II Avocet



HM792
Little Egret



HM831
Plovers



HM833
Seal And Pup



HM801
Colonel Mustard



HM798
Henrietta



HM811
Winter Fox



HM830
Dahlia



HM796
Whale Watch



HM800
Ship Shape



HM793
Seals Kissing



Andrew Palmer



AP001
Delabole Slate



AP003
Yellow Umber Red Distant Shore



AP802
Spring Equinox



AP034
Tregirls



AP193
Cot Valley 2



AP585
Porth Nanvean



AP002
Black Green White Seascape



AP584
Deep Sea



AP583
Cot Valley Mist



AP004
Grey Blue Umber Seascape



AP194
Morvah Afternoon



AP803
Beast From The East

Brigid Calderhead



BC037
Journey (detail)



BC036
Waft (detail)



BC176
Revelry



BC175
Dock

Product Information

Card: 150 x 150 mm, soft white uncoated 350gsm. **Envelope:** Kraft. Sold in units of 6
Plumette Notecard (single): 120 x 120 mm, soft white uncoated 350gsm. **Envelope:** Kraft

Una Joy



UJ624
Four Rows (detail)



UJ623
Four Rows (detail)



UJ050
Dusk



UJ700
Side By Side



UJ050
Chian Village



UJ155
Ice Moon



UJ006
Night Air



UJ005
Ice Land



UJ008
Dogwood

Plumette Notecards – pg.32



NC010
Little Garden



NCP737
Side By Side

Andrew Palmer is a contemporary artist living and working in Cornwall. His dramatic, emotionally charged paintings skillfully capture the light and atmosphere of the wild cornish coast.

Brigid Calderhead explores the natural landscape through abstract painting. She captures an essence of the varied shapes and colours we travel through using mixed media, ink, acrylic and graphite on card and canvas

After emerging from a childhood spent mostly on the floor doodling and writing stories and poems on scraps of office paper, **Una Joy** went on to study Fine Art in the 1970s at Colchester School of Art and Ravensbourne. When she isn't doodling and following up ideas for her Paper Bird illustrations she sometimes finds time to delve back into painting and printmaking where a preoccupation with transience and transformation takes her into a quiet, liminal space. The Paper Bird aardvarks, rabbits, cats, dogs, Inkybeak birds and knitting sheep know she'll come back. She always does.



Ian Cunliffe



IC1008
Sunset Parakeets



IC1009
Autumn Jay



IC1007
Moonlight



IC1011
Wood Pigeons



IC1010
Springer



IC1012
Percy And Orchids

Mark Jessett



MJ312
Planet



MJ652
Ceremonial



MJ311
Wooden House



MJ581
Anomalous Facets



MJ927
Ancestors



MJ306
Porcelain



MJ653
Ornament



MJ314
Witches

Product Information

Card: 150 x 150 mm, soft white uncoated 350gsm. **Envelope:** Kraft. Sold in units of 6
Plumette Notecard (single): 120 x 120 mm, soft white uncoated 350gsm. **Envelope:** Kraft

Mark Jessett cont.



MJ925
Blue Sticks



MJ926
Ceremonial (Finery study)



MJ313
Sea Chest



MJ928
Nature Table



MJ307
Totem



MJ305
Magic Rain



MJ582
Magic Forest (detail)



MJ304
Autumn House

Plumette Notecards – pg.33



NC734
Wooden House



NC735
Sea Chest



NC000
Mark Jessett



NC000
Mark Jessett

Ian Cunliffe worked at Shepperton Studios, creating special effects and spent five years as a designer and illustrator at Penguin Books before becoming a full-time illustrator. Ian works from home where he watches green parakeets (and the occasional dragon) fly past his studio window!

Mark Jessett is an abstract artist based in Devon. He studied Fine Art at Goldsmiths College, London, and specialises in making works on paper. Exploring relationships between colour, texture, translucency and opacity, Mark creates paintings that are absorbing and uplifting.



Andrew Palmer



AP001
Delabole Slate



AP003
Yellow Umber Red Distant Shore



AP802
Spring Equinox



AP034
Tregirls



AP193
Cot Valley 2



AP585
Porth Nanvean



AP002
Black Green White Seascape



AP584
Deep Sea



AP583
Cot Valley Mist



AP004
Grey Blue Umber Seascape



AP194
Morvah Afternoon



AP803
Beast From The East

Andrew Palmer is a contemporary artist living and working in Cornwall. His dramatic, emotionally charged paintings skillfully capture the light and atmosphere of the wild cornish coast.

Product Information

Card: 150 x 150 mm, soft white uncoated 350gsm. **Envelope:** Kraft. Sold in units of 6
Plumette Notecard (single): 120 x 120 mm, soft white uncoated 350gsm. **Envelope:** Kraft

Una Joy



UJ624
Four Rows (detail)



UJ623
Four Rows (detail)



UJ050
Dusk



UJ700
Side By Side



UJ050
Chian Village



UJ155
Ice Moon



UJ006
Night Air



UJ005
Ice Land



UJ008
Dogwood

Plumette Notecards – pg.32



NC010
Little Garden



NCP737
Side By Side

After emerging from a childhood spent mostly on the floor doodling and writing stories and poems on scraps of office paper, **Una Joy** went on to study Fine Art in the 1970s at Colchester School of Art and Ravensbourne. When she isn't doodling and following up ideas for her Paper Bird illustrations

she sometimes finds time to delve back into painting and printmaking where a preoccupation with transience and transformation takes her into a quiet, liminal space. The Paper Bird aardvarks, rabbits, cats, dogs, Inkybeak birds and knitting sheep know she'll come back. She always does.

